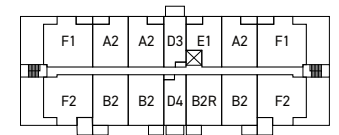
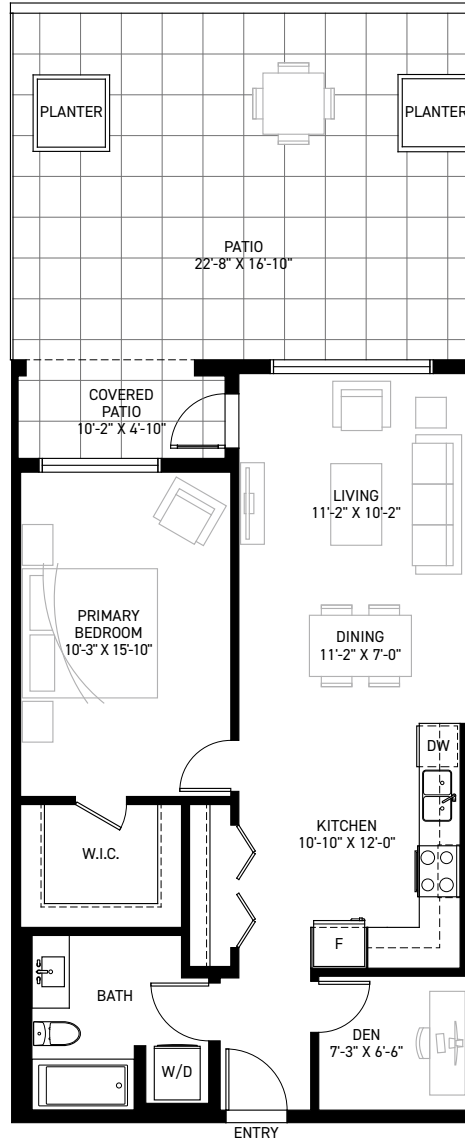


THE NÔRTH

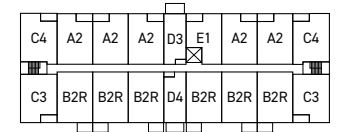
AT PORT HANEY

Plan A1

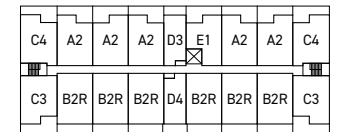
1 Bedroom + Den, 1 Bath
 Interior: 794 Sq.Ft.
 Exterior: 44-418 Sq.Ft.



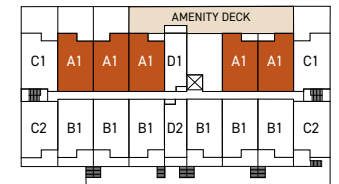
LEVEL 5



LEVEL 4



LEVEL 3



LEVEL 2



©2022 Falcon Homes • An offering for sale may only be made after filing a Disclosure Statement under the Real Estate Development Marketing Act. Contact the developer's agent for further details as well as a copy of the Disclosure Statement when available. After a Disclosure statement is filed, the developer reserves the right to make modifications to building design, specifications, features and floor plans. Illustrations and renderings reflect an artist's interpretation of the project. When built, actual suites, amenities, building interiors, exteriors and views may be noticeably different than what is depicted. E&OE.

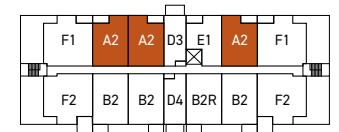
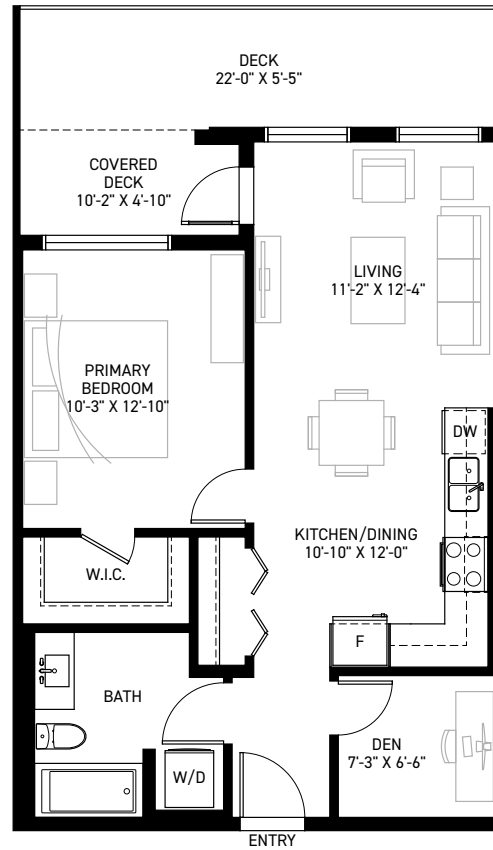
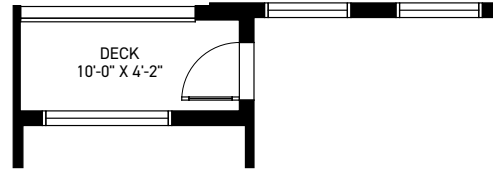


THE NÔRTH

AT PORT HANEY

Plan A2

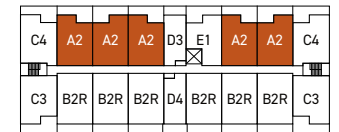
1 Bedroom + Den, 1 Bath
 Interior: 683 Sq.Ft.
 Exterior (3F): 166 Sq.Ft.
 Exterior (4-5F): 45 Sq.Ft.



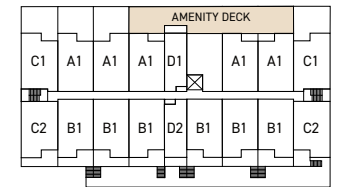
LEVEL 5



LEVEL 4



LEVEL 3



LEVEL 2



©2022 Falcon Homes • An offering for sale may only be made after filing a Disclosure Statement under the Real Estate Development Marketing Act. Contact the developer's agent for further details as well as a copy of the Disclosure Statement when available. After a Disclosure statement is filed, the developer reserves the right to make modifications to building design, specifications, features and floor plans. Illustrations and renderings reflect an artist's interpretation of the project. When built, actual suites, amenities, building interiors, exteriors and views may be noticeably different than what is depicted. E&OE.

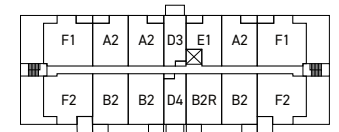
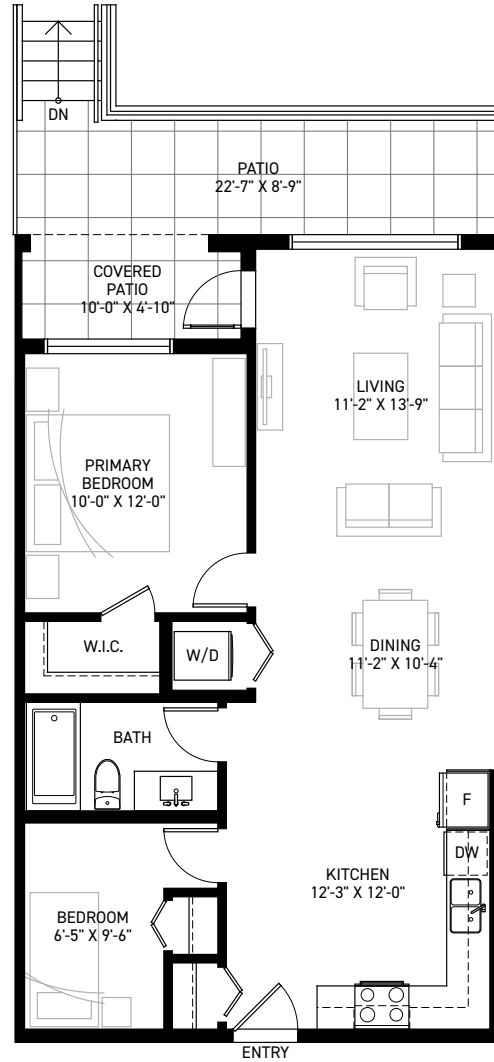


THE NÔRTH

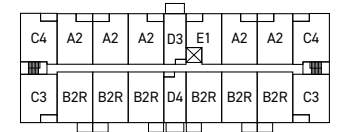
AT PORT HANEY

Plan B1

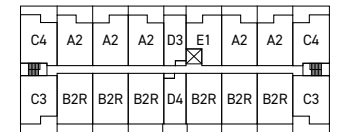
Jr. 2 Bedroom, 1 Bath
 Interior: 794 Sq.Ft.
 Exterior: 147-170 Sq.Ft.



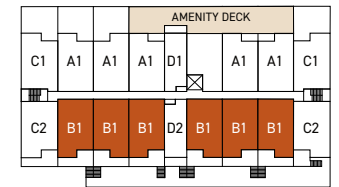
LEVEL 5



LEVEL 4



LEVEL 3



LEVEL 2



©2022 Falcon Homes • An offering for sale may only be made after filing a Disclosure Statement under the Real Estate Development Marketing Act. Contact the developer's agent for further details as well as a copy of the Disclosure Statement when available. After a Disclosure statement is filed, the developer reserves the right to make modifications to building design, specifications, features and floor plans. Illustrations and renderings reflect an artist's interpretation of the project. When built, actual suites, amenities, building interiors, exteriors and views may be noticeably different than what is depicted. E&OE.

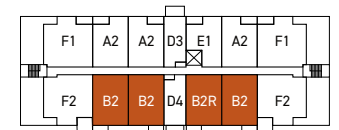
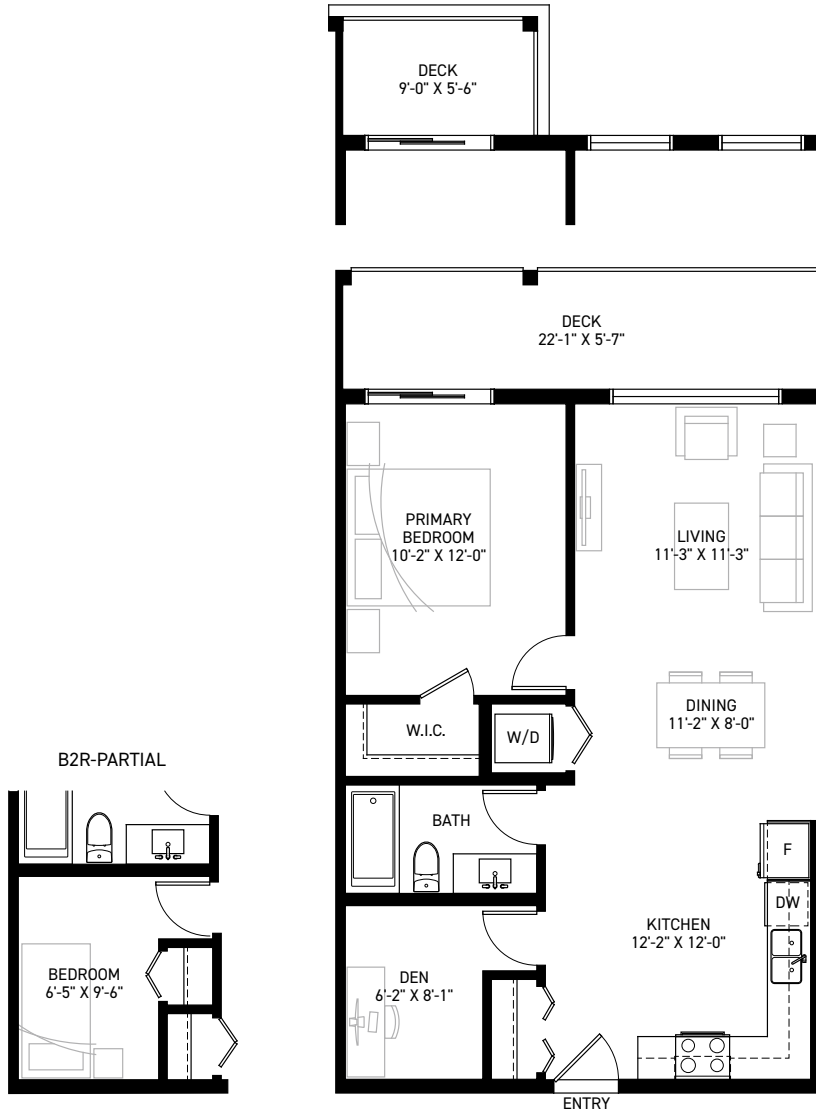


THE NÔRTH

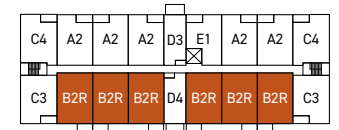
AT PORT HANEY

Plan B2 | B2R

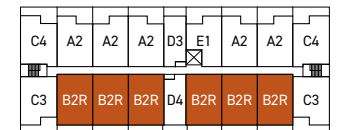
1 Bedroom + Den | Jr. 2 Bedroom, 1 Bath
 Interior: 736 Sq.Ft.
 Exterior (3F): 121 Sq.Ft.
 Exterior (4-5F): 44-49 Sq.Ft.



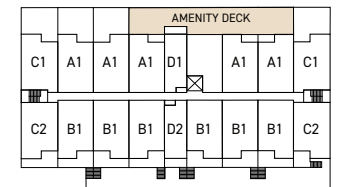
LEVEL 5



LEVEL 4



LEVEL 3



LEVEL 2



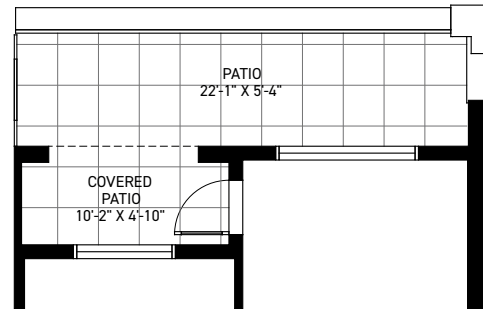
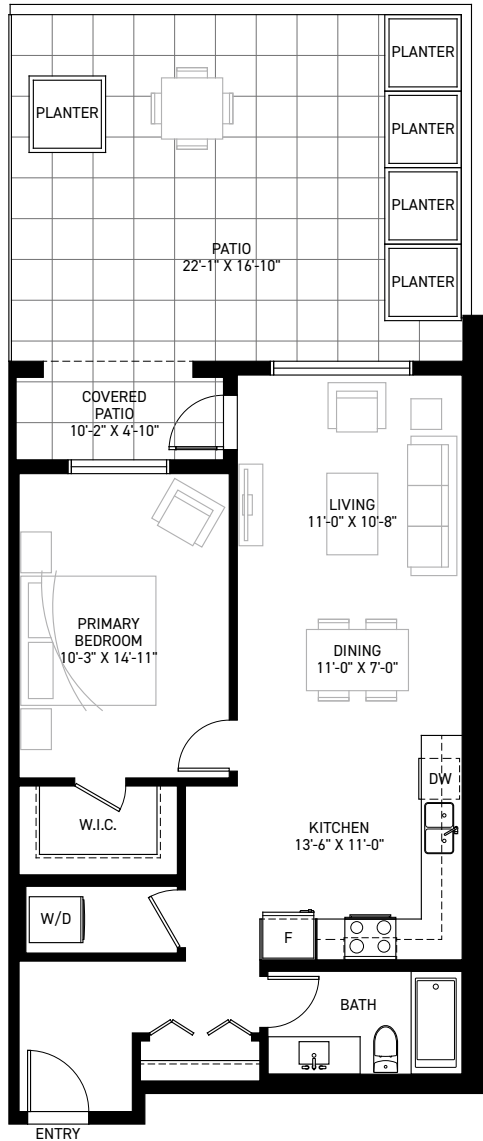
©2022 Falcon Homes • An offering for sale may only be made after filing a Disclosure Statement under the Real Estate Development Marketing Act. Contact the developer's agent for further details as well as a copy of the Disclosure Statement when available. After a Disclosure statement is filed, the developer reserves the right to make modifications to building design, specifications, features and floor plans. Illustrations and renderings reflect an artist's interpretation of the project. When built, actual suites, amenities, building interiors, exteriors and views may be noticeably different than what is depicted. E&OE.

THE NÔRTH

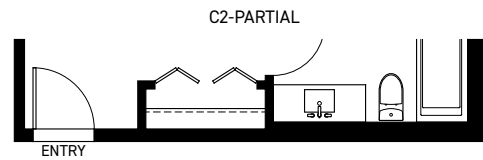
AT PORT HANEY

Plan C1 | C2

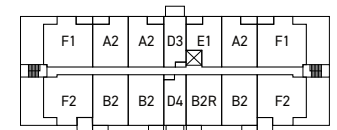
1 Bedroom, 1 Bath
 Interior: 757-767 Sq.Ft.
 Exterior: 165-350 Sq.Ft.



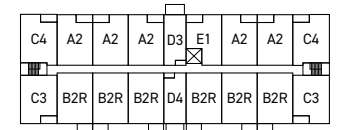
C2-PARTIAL



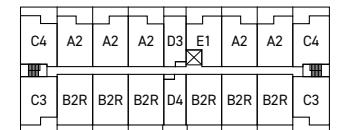
C2-PARTIAL



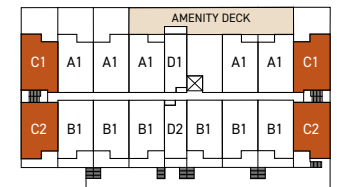
LEVEL 5



LEVEL 4



LEVEL 3



LEVEL 2



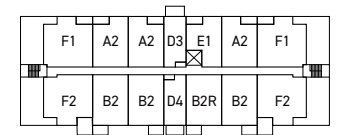
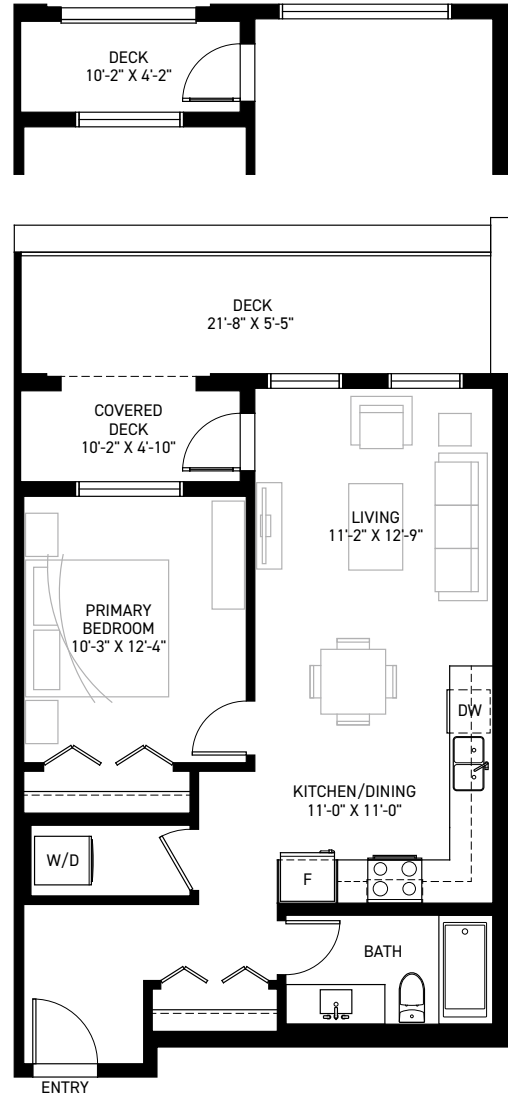
©2022 Falcon Homes • An offering for sale may only be made after filing a Disclosure Statement under the Real Estate Development Marketing Act. Contact the developer's agent for further details as well as a copy of the Disclosure Statement when available. After a Disclosure statement is filed, the developer reserves the right to make modifications to building design, specifications, features and floor plans. Illustrations and renderings reflect an artist's interpretation of the project. When built, actual suites, amenities, building interiors, exteriors and views may be noticeably different than what is depicted. E&OE.

THE NÔRTH

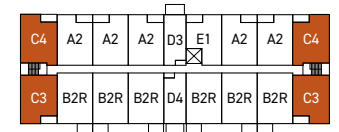
AT PORT HANEY

Plan C3 | C4

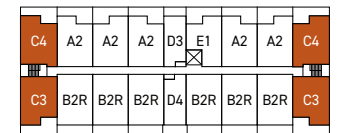
1 Bedroom, 1 Bath
 Interior: 646-656 Sq.Ft.
 Exterior (3F): 164 Sq.Ft.
 Exterior (4F): 45 Sq.Ft.



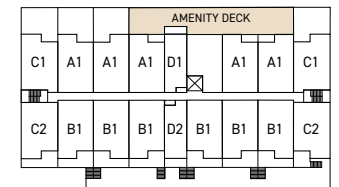
LEVEL 5



LEVEL 4



LEVEL 3



LEVEL 2



©2022 Falcon Homes • An offering for sale may only be made after filing a Disclosure Statement under the Real Estate Development Marketing Act. Contact the developer's agent for further details as well as a copy of the Disclosure Statement when available. After a Disclosure statement is filed, the developer reserves the right to make modifications to building design, specifications, features and floor plans. Illustrations and renderings reflect an artist's interpretation of the project. When built, actual suites, amenities, building interiors, exteriors and views may be noticeably different than what is depicted. E&OE.

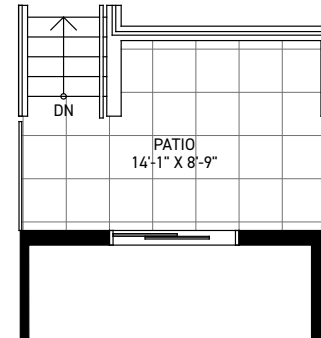
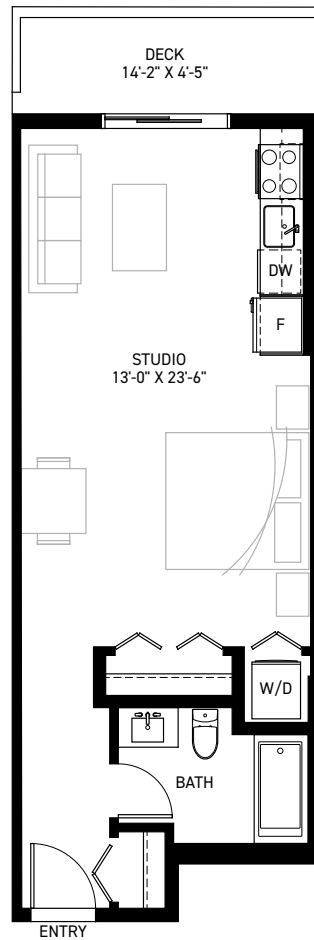


THE NÔRTH

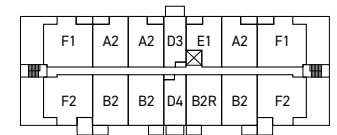
AT PORT HANEY

Plan D1 | D2

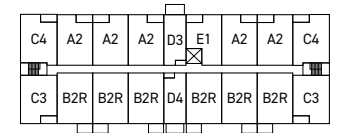
Studio, 1 Bath
 Interior: 512-523 Sq.Ft.
 Exterior: 58-77 Sq.Ft.



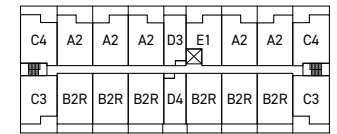
D2-PARTIAL



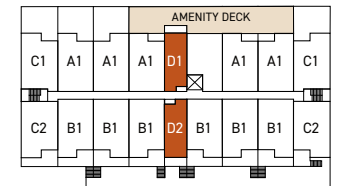
LEVEL 5



LEVEL 4



LEVEL 3



LEVEL 2



©2022 Falcon Homes • An offering for sale may only be made after filing a Disclosure Statement under the Real Estate Development Marketing Act. Contact the developer's agent for further details as well as a copy of the Disclosure Statement when available. After a Disclosure statement is filed, the developer reserves the right to make modifications to building design, specifications, features and floor plans. Illustrations and renderings reflect an artist's interpretation of the project. When built, actual suites, amenities, building interiors, exteriors and views may be noticeably different than what is depicted. E&OE.

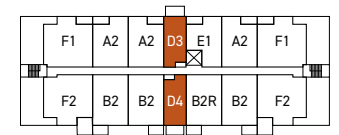
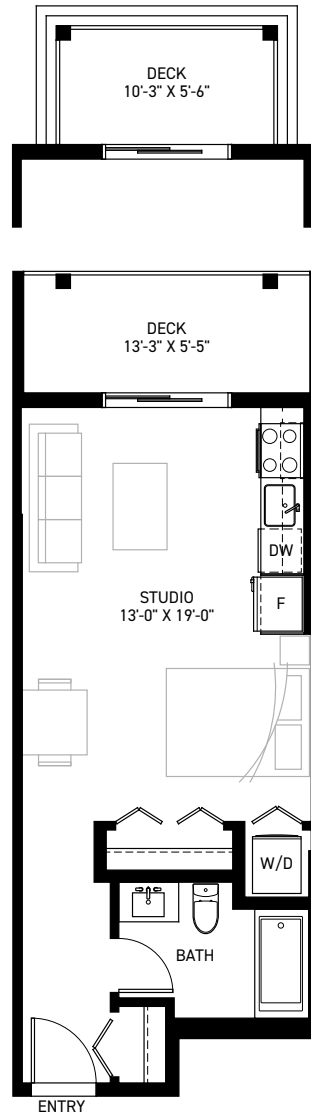


THE NÔRTH

AT PORT HANEY

Plan D3 | D4

Studio, 1 Bath
 Interior: 443-454 Sq.Ft.
 Exterior (3F): 71-85 Sq.Ft.
 Exterior (4-5F): 55 Sq.Ft.



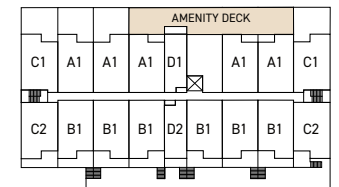
LEVEL 5



LEVEL 4



LEVEL 3



LEVEL 2



©2022 Falcon Homes • An offering for sale may only be made after filing a Disclosure Statement under the Real Estate Development Marketing Act. Contact the developer's agent for further details as well as a copy of the Disclosure Statement when available. After a Disclosure statement is filed, the developer reserves the right to make modifications to building design, specifications, features and floor plans. Illustrations and renderings reflect an artist's interpretation of the project. When built, actual suites, amenities, building interiors, exteriors and views may be noticeably different than what is depicted. E&OE.

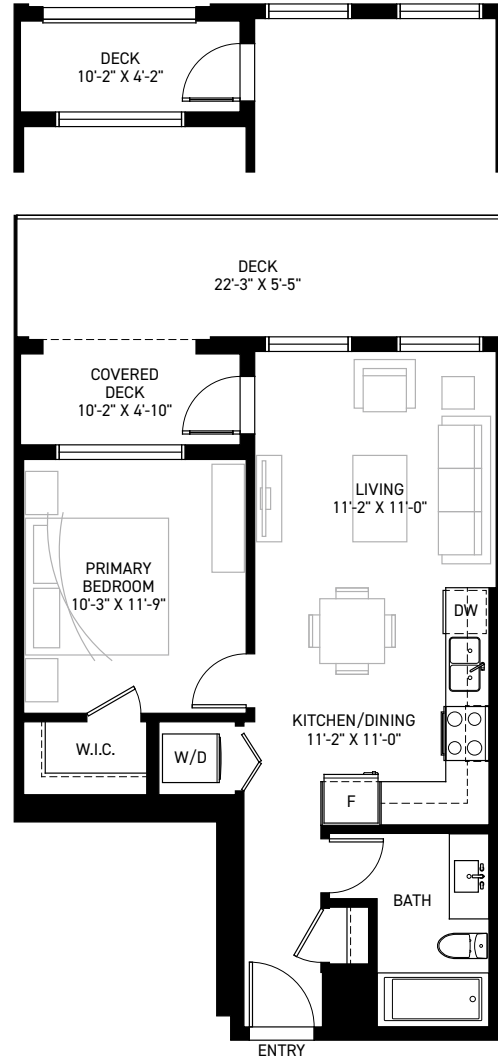


THE NÔRTH

AT PORT HANEY

Plan E1

1 Bedroom, 1 Bath
 Interior: 574 Sq.Ft.
 Exterior (3F): 166 Sq.Ft.
 Exterior (4-5F): 45 Sq.Ft.



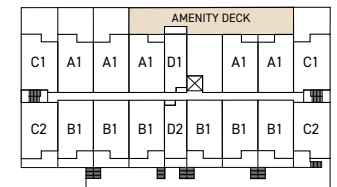
LEVEL 5



LEVEL 4



LEVEL 3



LEVEL 2



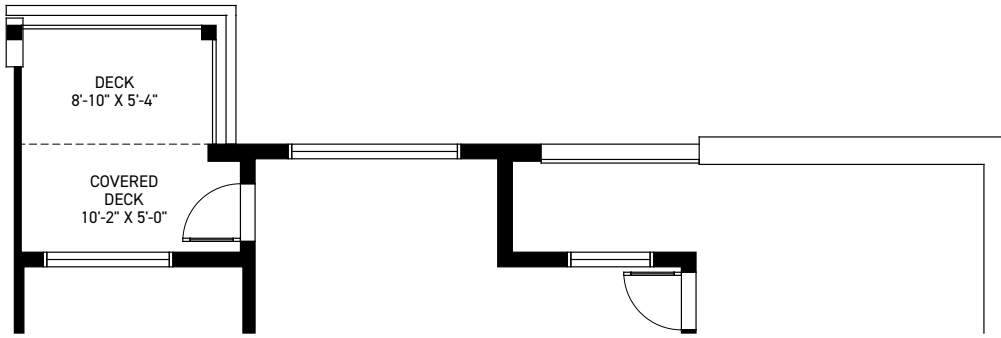
©2022 Falcon Homes • An offering for sale may only be made after filing a Disclosure Statement under the Real Estate Development Marketing Act. Contact the developer's agent for further details as well as a copy of the Disclosure Statement when available. After a Disclosure statement is filed, the developer reserves the right to make modifications to building design, specifications, features and floor plans. Illustrations and renderings reflect an artist's interpretation of the project. When built, actual suites, amenities, building interiors, exteriors and views may be noticeably different than what is depicted. E&OE.

THE NÔRTH

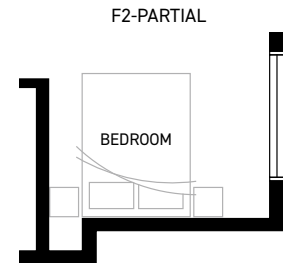
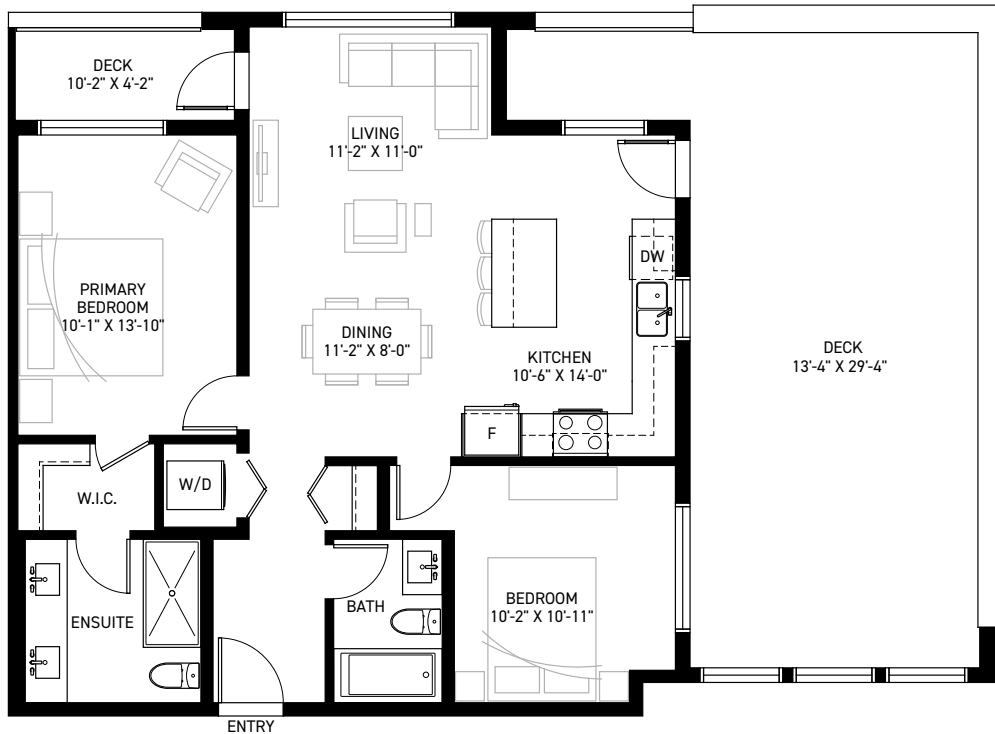
AT PORT HANEY

Plan F1 | F2

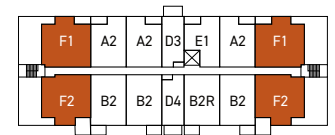
2 Bedroom, 2 Bath
 Interior: 906-916 Sq.Ft.
 Exterior: 473-522 Sq.Ft.



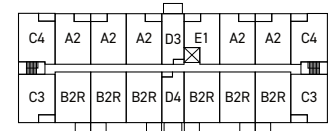
F2-PARTIAL



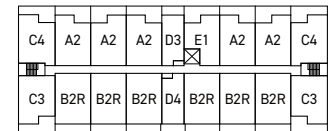
F2-PARTIAL



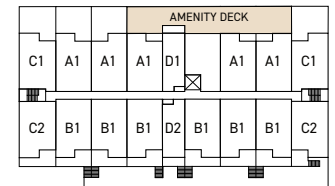
LEVEL 5



LEVEL 4



LEVEL 3

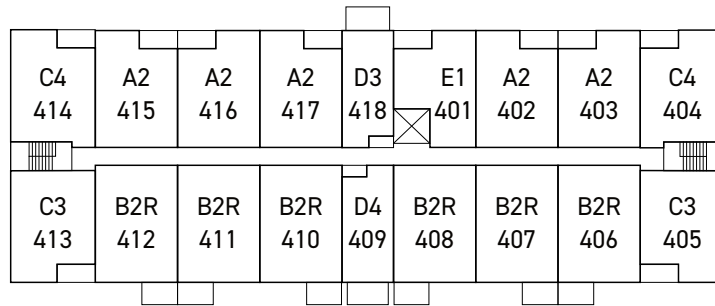


LEVEL 2

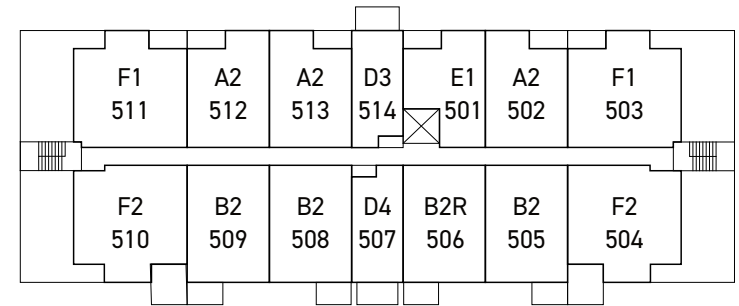


©2022 Falcon Homes • An offering for sale may only be made after filing a Disclosure Statement under the Real Estate Development Marketing Act. Contact the developer's agent for further details as well as a copy of the Disclosure Statement when available. After a Disclosure statement is filed, the developer reserves the right to make modifications to building design, specifications, features and floor plans. Illustrations and renderings reflect an artist's interpretation of the project. When built, actual suites, amenities, building interiors, exteriors and views may be noticeably different than what is depicted. E&OE.

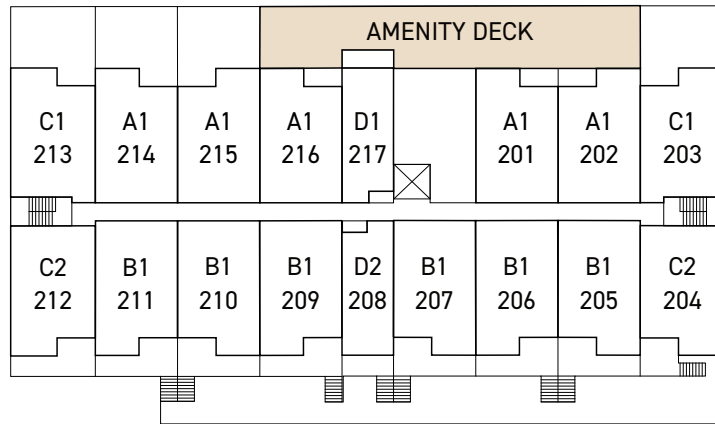




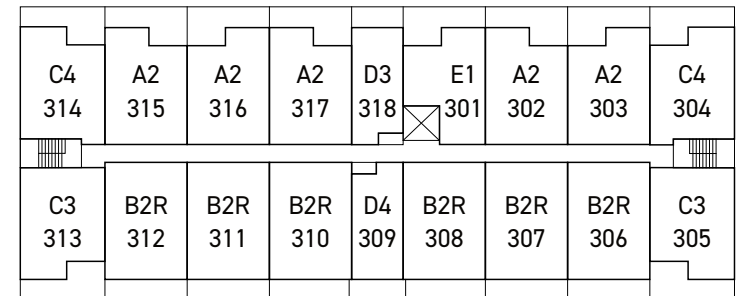
LEVEL 4



LEVEL 5



LEVEL 2



LEVEL 3